

AGRICULTURE TRENDS IN TIMOR-LESTE FROM 2010-2015

Analysis of agricultural data derived from the 2015 Timor-Leste National Population and Housing Census (NPHC) which was conducted 11th - 12th July 2015 and aimed at assessing progress in the agriculture sector since 2010

THE 2015 DATA CAME FROM

1 183 643 people

204 597 households

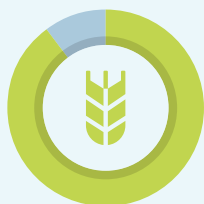


70% of the population are reported in rural areas

49.2% of the population were female

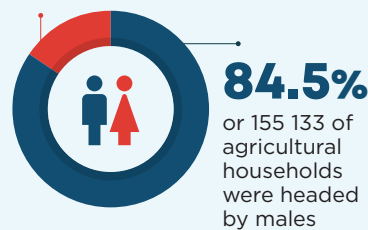
50.8% of the population were male

KEY AGRICULTURAL HOUSEHOLD DATA



89.8%
or 183 633 households were engaged in agriculture

15.5%
or 28 500 of agricultural households were headed by females



84.5%
or 155 133 of agricultural households were headed by males

AGE RANGE OF AGRICULTURAL HOUSEHOLD HEADS



0.6% younger than 20 years

8.5% 20-29 years

19.4% 30-39 years

25.9% 40-49 years

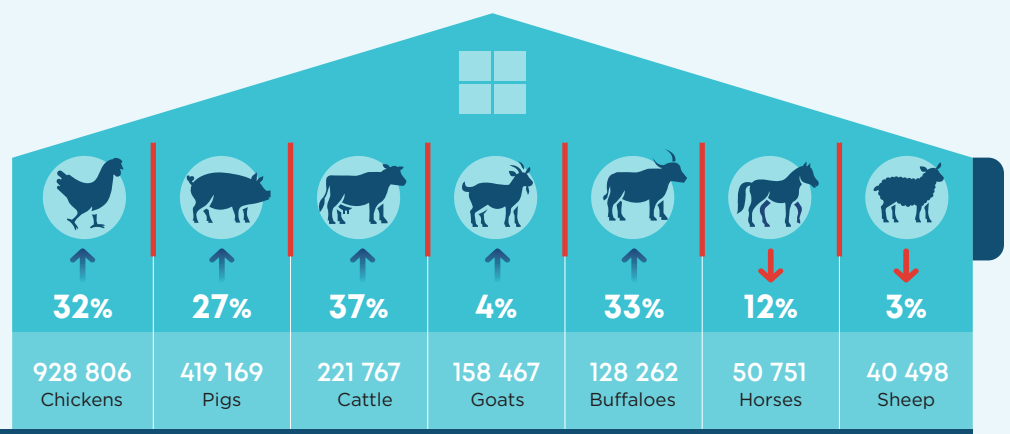
45.5% 50 years or older

LIVESTOCK

21%

more households began raising livestock between 2010 and 2015

Livestock numbers in 2015 and movement from 2010 to 2015



87.2%
or 178 363 households in Timor-Leste rear livestock



84.7%
of livestock rearing households are male headed



15.3%
of livestock rearing households are female headed



99.5%
of livestock households rear livestock for their own use



98.1%
of livestock households rear livestock to sell



Food and Agriculture
Organization of the
United Nations



CROPPING

40%

more households began growing crops in Timor-Leste from 2010 to 2015

Increase in households growing these crops from 2010 to 2015



Rice

↑ **57%**



Coffee

↑ **50%**



Maize

↑ **39%**



Cassava

↑ **38%**



Vegetables

↑ **35%**



Coconuts

↑ **34%**



Fruit:
permanent

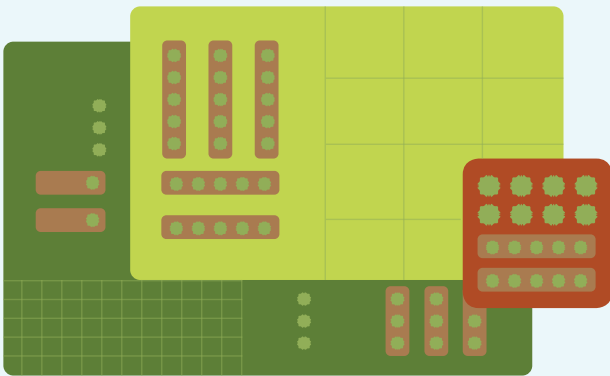
↑ **16%**



Fruit:
temporary

↑ **14%**

CROPPING LAND BY LAND SIZE

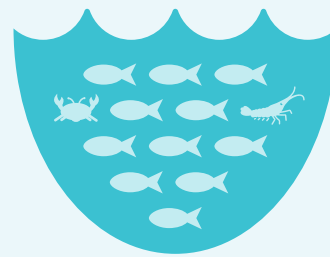


63% of crop producing households cultivated less than 1 hectare of land

31% of crop producing households cultivated between 1 and 5 hectares of land

2% of crop producing households cultivated more than 5 hectares of land

68 413 OR 33% OF TIMOR-LESTE HOUSEHOLDS ENGAGED IN AQUACULTURE AND FISHING IN 2015



85%

of fisheries households were engaged in aquaculture activities only



9%

of fisheries households were engaged in both aquaculture and fishing activities



6%

of fisheries households were engaged in fishing activities only