



**MINISTÉRIO DAS FINANÇAS**  
**DIRECÇÃO – GERAL DE ESTATÍSTICA**  
*DIRECÇÃO NACIONAL DE ESTATÍSTICA ECONOMICAS E SOCIAIS*

CPI SERI 2 EDISAUN BA DALAHITU

# **INDISE PRESU KONSUMUDOR TIMOR-LESTE JULHO 2013**



**MINISTÉRIO DAS FINANÇAS**  
**DIRECÇÃO – GERAL DE ESTATÍSTICA**  
*DIRECÇÃO NACIONAL DE ESTATÍSTICA ECONOMICAS E SOCIAIS*  
**Rua: Caicoli Dili, Timor-Leste**  
**Telephone: 3339527**

[www.dne.mof.gov.tl](http://www.dne.mof.gov.tl)

CPI Seri 2

# Konteudu

1. Konteudu.....	i
2. Pontus Save Julho 2013 Tuir Grafiku.....	1-2
3. Grafiku Numeru Indise Timor-Leste fulan Julho Tuir Grupu 2013.....	2
4. Tabela 1 : Indise Presu Konsumedor (IPK) Timor-Leste fulan Julho 2013.....	3
5. Tabela 2 : Analytiku Indise Rejiaun Dili fulan Julho 2013.....	4
6. Tabela 3 : Analytiku Indise Ex-Dili fulan Julho 2013.....	5
7. Notas Esplikasaun.....	6-7

## NOTA

MUDANSA IHA EDISAUN INTRUDUSAUN CPI SERI 2      Laiha

EDISAUN TUIR MAI	TUIR MAI	DATA REALISA
	Augustus 2013	Setembru 17, 2013
	Setembru 2013	Outubru 15, 2013

INFORMASAUN

Atu hatene informasaun kona ba buat sira ne'e iha  
Relasaun ho IPK, kontaktu:

.....

1. Paulina Rita Viegas, Directora DNEES.  
Email [prviegas@mof.gov.tl](mailto:prviegas@mof.gov.tl) No telf 77305918
2. Eduardo Martinho Ximenes, Chefe Dep. Social  
Economi [emximenes@mof.gov.tl](mailto:emximenes@mof.gov.tl) No telf:  
77339216.
3. Maria do Carmo Moreira, Email:  
[mdcmoreira@mof.gov.tl](mailto:mdcmoreira@mof.gov.tl). No telf: 77569800
4. Fidencio de Araujo, Email:  
[fdaraujo@mof.gov.tl](mailto:fdaraujo@mof.gov.tl) No. telf: 77376458
5. Botavio J.Alves, Email: [bjalves@mof.gov.tl](mailto:bjalves@mof.gov.tl)



**Antonio Freitas**  
Director Geral of Statistics



MINISTÉRIO DAS FINANÇAS  
DIRECÇÃO – GERAL DE ESTATÍSTICA



DIRECÇÃO NACIONAL DE ESTATÍSTICA ECONOMICAS E SOCIAIS

EDISAUN No 7 (23 de Agustus 2013)

## INDISE PRESU KONSUMEDOR TIMOR - LESTE, JULHO 2013

### INTRODUSAUN IPK SERI 2

Ida ne'e hanesan publikasaun ba dalahitu CPI Timor-Leste seri 2. Edisaun ne'e sei publika kada fulan hahu husi edisaun fulan Janeiru 2013. Sei publika mos analiza mensal husi indise Dili nian no Ex- Dili.

Publikasaun hotu-hotu Indise Janeiru 2013 refere fali ba Desembru 2012=100.0 (*hanesan fulan/tinan base ba IPK seri 2*). Tempu seri data nian detailu konaba todan IPK foun, no informasaun seluk relasiona ba movimentu IPK Timor-Leste, bele hare iha DNE website [www.dne.mof.gov.tl](http://www.dne.mof.gov.tl)

### NUMERUS SAVE JULHO 2013

Indise Presu Konsumedor Timor-Leste	Mensal	Annual (a)
	Jun - 2013 to Jul - 2013 % Troka	Jul. - 2012 to Jul. - 2013 % Troka
<b>Grupu hotu IPK</b>	<b>-0.4%</b>	<b>n/a</b>
Grupu hotu la konta uma	-0.4%	n/a
1. Hahan no bebidas	-0.7%	n/a
2. Alkohol ho tabaku	0.4%	n/a
3. Hatais ho sapatu	0.0%	n/a
4. Uma	-0.4%	n/a
5. Manutensaun rutina ba equipamentu no mobiliariu uma kain	0.1%	n/a
6. Saude	0.0%	n/a
7. Transportasaun	1.0%	n/a
8. Komunikaun	0.0%	n/a
9. Rekreaun no kultura	0.0%	n/a
10. Edukasaun	0.0%	n/a

(a) Movimentu annual 2013 sei hahu publika deit ba fulan Marsu, Junho, Setembru, no Dezembru, maibe'e Janeiru 2014 ba oin movimentu annual sei publika tuir fulan basico.

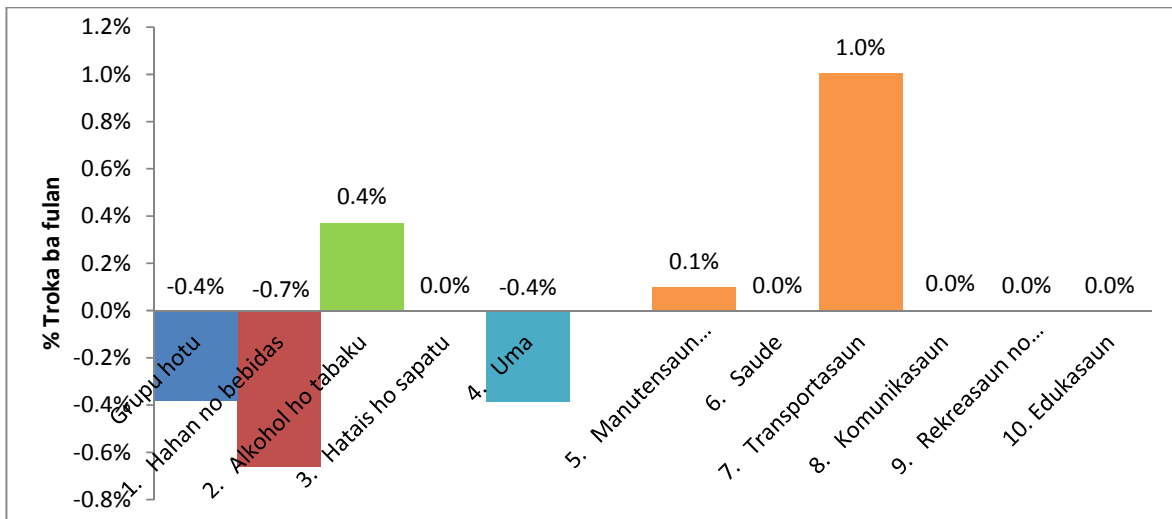
## PONTUS SAVE JULHO 2013

**TOTAL GRUPO IPK** Tun (-0.4%) iha Julho 2013 kompara ba fulan kotuk sae, 0.3% iha fulan Junho 2013.

### ESPLIKASAUN MOVEMENTASAUN IPK

- Presu signifikante ba fulan ida ne'e, tun wainhira iha grupu Hahan no bebidas (-0.7%), no Uma (-0.4%).
- Tun iha Parte nebe'e signifikante, hanesan hahan no bebidas ba grupu Vejetais (-1.4%).
- Presu nebe signifikante sae ba fulan ida hanesan Transportasaun (1.0%) no Alkohol ho tabaku (0.4%).
- Menus husi parte grupu hahan no bebidas hanesan impaktu bot nebe as ba nivel rate inflasaun ho pontu -0.44, kontribuisaun sae (husi pontu 67.54 ba 67.98) ba total kontribuisaun grupu IPK.

### PORSENTU IPK TIMOR- LESTE TROKA BA FULAN



Edisaun IPK Timor – Leste Agustu 2013 sei fo sai 17 de Setembru 2013

TABELA 1. IPK TIMOR-LESTE		NUMERU INDISE			TROKA PERSENTAGEN		KONTRIBUISAUN PONTUS		TROKA PONTUS
		Jul 2012	Jun 2013	Jul 2013	Jun-13 to Jul-13	Jul-12 to Jul-13	Jun 2013	Jul 2013	Jun-13 to Jul-13
<b>Julho 2013</b>									
<b>Grupus no Klase Despesas/Gastus</b>									
	<b>GRUPU HOTU</b>	n/a	<b>104.0</b>	<b>103.6</b>	<b>-0.4%</b>	n/a	<b>104.0</b>	<b>103.6</b>	<b>-0.4</b>
	<b>GRUPU HOTU LA KONTA UMA</b>	n/a	103.9	103.5	-0.4%	n/a			
<b>1</b>	<b>HAHAN NO BEBIDAS</b>	n/a	<b>105.6</b>	<b>104.9</b>	<b>-0.7%</b>	n/a	<b>67.98</b>	<b>67.54</b>	<b>-0.44</b>
1.1	Pao ho hahan husi Fós	n/a	104.6	103.4	-1.1%	n/a	4.66	4.61	-0.05
1.2	Fós	n/a	108.0	107.5	-0.5%	n/a	18.56	18.48	-0.08
1.3	Naan	n/a	107.2	107.3	0.1%	n/a	8.57	8.58	0.01
1.4	Ikan ho hahan tasi	n/a	103.7	103.3	-0.4%	n/a	2.77	2.76	-0.01
1.5	Susu ben, keju ho manu tolung	n/a	104.4	104.8	0.4%	n/a	1.66	1.66	0.00
1.6	Bokur ho mina	n/a	105.5	105.3	-0.2%	n/a	3.44	3.44	0.00
1.7	Frutas	n/a	102.4	102.5	0.1%	n/a	2.32	2.33	0.01
1.8	Vejetais	n/a	105.8	104.3	-1.4%	n/a	16.34	16.11	-0.23
1.9	Masin midar, marmelada, bani ben, chocolate	n/a	105.4	103.9	-1.4%	n/a	3.38	3.33	-0.05
1.10	Produu Aihan	n/a	99.0	99.0	0.0%	n/a	2.93	2.93	0.00
1.11	Café, xá, no kakau	n/a	100.8	100.2	-0.6%	n/a	2.09	2.08	-0.01
1.12	Be, Bebidas, jus ai fuan no modo tahan	n/a	106.5	105.2	-1.2%	n/a	0.71	0.70	-0.01
1.13	Hahan preparadu	n/a	98.1	98.1	0.0%	n/a	0.53	0.53	0.00
<b>2</b>	<b>ALKOHOL HO TABAKU</b>	n/a	<b>108.1</b>	<b>108.5</b>	<b>0.4%</b>	n/a	<b>5.27</b>	<b>5.29</b>	<b>0.02</b>
2.1	Alkohol	n/a	124.4	124.6	0.2%	n/a	1.68	1.68	0.00
2.2	Tabaku	n/a	101.8	102.3	0.5%	n/a	3.59	3.61	0.02
<b>3</b>	<b>HATAIS HO SAPATU</b>	n/a	<b>100.5</b>	<b>100.5</b>	<b>0.0%</b>	n/a	<b>5.88</b>	<b>5.87</b>	<b>-0.01</b>
3.1	Ropa ba mane	n/a	99.7	99.7	0.0%	n/a	1.19	1.19	0.00
3.2	Ropa ba fetu	n/a	99.7	99.7	0.0%	n/a	0.88	0.88	0.00
3.3	Ropa ba labarik ho bebe	n/a	100.8	100.8	0.0%	n/a	1.97	1.97	0.00
3.4	Sapatu ho rikusoin rasik	n/a	100.7	100.6	-0.1%	n/a	1.84	1.84	0.00
<b>4</b>	<b>UMA</b>	n/a	<b>103.2</b>	<b>102.8</b>	<b>-0.4%</b>	n/a	<b>5.86</b>	<b>5.84</b>	<b>-0.02</b>
4.1	Aluga uma	n/a	100.0	100.0	0.0%	n/a	0.69	0.69	0.00
4.2	Manutensaun no hadia hela fatin	n/a	104.7	103.3	-1.3%	n/a	1.47	1.45	-0.02
4.3	Be, eletrisidade, gas no sira seluk	n/a	103.1	103.1	0.0%	n/a	3.70	3.70	0.00
<b>5</b>	<b>MANUTENSAUN RUTINA BA EQUIPAMENTU NO MOBILIARIU UMA LARAN</b>	n/a	<b>101.1</b>	<b>101.2</b>	<b>0.1%</b>	n/a	<b>4.19</b>	<b>4.20</b>	<b>0.01</b>
5.1	Mobiliariu no tekstil uma laran	n/a	102.0	102.1	0.1%	n/a	0.32	0.32	0.00
5.2	Manutensaun uma laran	n/a	100.6	99.7	-0.9%	n/a	0.37	0.36	-0.01
5.3	Material no badaen hadia uma	n/a	101.1	101.3	0.2%	n/a	3.51	3.51	0.00
<b>6</b>	<b>SAUDE</b>	n/a	<b>99.9</b>	<b>99.9</b>	<b>0.0%</b>	n/a	<b>0.74</b>	<b>0.74</b>	<b>0.00</b>
6.1	Produu medikamentus no material equipamentus	n/a	99.8	99.8	0.0%	n/a	0.47	0.47	0.00
6.2	Doutor no atendimentu husi hospital	n/a	100.0	100.0	0.0%	n/a	0.27	0.27	0.00
<b>7</b>	<b>TRANSPORTASAUN</b>	n/a	<b>99.3</b>	<b>100.3</b>	<b>1.0%</b>	n/a	<b>6.37</b>	<b>6.43</b>	<b>0.06</b>
7.1	Sosa karetu	n/a	101.9	101.9	0.0%	n/a	0.60	0.60	0.00
7.2	Utiliza equipamentu transportasaun pessoal	n/a	98.0	100.1	2.1%	n/a	3.01	3.07	0.06
7.3	Hadia transportasaun	n/a	100.0	100.0	0.0%	n/a	2.76	2.76	0.00
<b>8</b>	<b>KOMUNIKASAUN</b>	n/a	<b>87.8</b>	<b>87.8</b>	<b>0.0%</b>	n/a	<b>2.03</b>	<b>2.03</b>	<b>0.00</b>
8.1	Hadia equipamentu telekomunikasaun	n/a	87.8	87.8	0.0%	n/a	2.03	2.03	0.00
<b>9</b>	<b>REKREASAUN NO KULTURA</b>	n/a	<b>99.5</b>	<b>99.5</b>	<b>0.0%</b>	n/a	<b>3.31</b>	<b>3.31</b>	<b>0.00</b>
9.1	Equipamentus audio visual, fotografia no produs informasaun	n/a	97.9	97.7	-0.2%	n/a	0.02	0.02	0.00
9.2	Sasan rekreasaun no kultura	n/a	98.8	98.8	0.0%	n/a	2.12	2.12	0.00
9.3	Jornal, livru no equipamentu hakerek	n/a	101.2	101.2	0.0%	n/a	1.17	1.17	0.00
<b>10</b>	<b>EDUKASAUN</b>	n/a	<b>100.0</b>	<b>100.0</b>	<b>0.0%</b>	n/a	<b>2.34</b>	<b>2.34</b>	<b>0.00</b>
10.1	Edukasaun	n/a	100.0	100.0	0.0%	n/a	2.34	2.34	0.00

Periode referencia husi Indise: Dezembru 2012 = 100.0

TABELA 2. Analytiku Indise - DILI			NUMERU INDISE			TROKA PERSENTAGEN		KONTRIBUISAUN PONTUS		TROKA PONTUS
			Jul 2012	Jun 2013	Jul 2013	Jun-13 to Jul-13	Jul-12 to Jul-13	Jun 2013	Jul 2013	Jun-13 to Jul-13
<b>Julho 2013</b>										
<b>Grupus no Klase Despesas/Gastus</b>										
<b>GRUPU HOTU</b>			<b>92.1</b>	<b>104.0</b>	<b>103.6</b>	<b>-0.4%</b>	<b>12.4%</b>	<b>104.0</b>	<b>103.6</b>	<b>-0.4</b>
<b>GRUPU HOTU LA KONTA UMA</b>			91.9	104.3	103.9	-0.4%	13.0%			
<b>1</b>	<b>HAHAN NO BEBIDAS</b>		<b>90.8</b>	<b>106.4</b>	<b>105.7</b>	<b>-0.7%</b>	<b>16.4%</b>	<b>65.90</b>	<b>65.45</b>	<b>-0.45</b>
1.1	Pao ho hahan husi Fós		86.9	105.2	103.7	-1.4%	19.4%	4.51	4.45	-0.06
1.2	Fós		86.9	110.5	110.5	0.0%	27.2%	16.65	16.65	0.00
1.3	Naan		92.8	109.5	108.9	-0.5%	17.4%	9.15	9.10	-0.05
1.4	Ikan ho hahan tasi		89.0	103.7	103.4	-0.3%	16.2%	3.12	3.11	-0.01
1.5	Susu ben, keju ho manu tolun		95.3	104.7	105.1	0.4%	10.3%	1.87	1.88	0.01
1.6	Bokur ho mina		100.0	106.9	106.7	-0.2%	6.7%	3.26	3.25	-0.01
1.7	Frutas		91.3	103.0	103.0	0.0%	12.8%	2.48	2.48	0.00
1.8	Vejetais		91.4	106.0	104.5	-1.4%	14.3%	15.64	15.42	-0.22
1.9	Masin midar,marmelada,bani ben,chocolate		n/a	104.4	102.2	-2.1%	n/a	3.25	3.18	-0.07
1.10	Produtu Aihan		n/a	97.5	96.9	-0.6%	n/a	2.69	2.67	-0.02
1.11	Café, xá, no kakau		n/a	97.1	96.3	-0.8%	n/a	1.84	1.83	-0.01
1.12	Be, Bebidas, jus ai fuan no modo tahan		86.3	106.3	105.2	-1.0%	21.9%	0.81	0.80	-0.01
1.13	Hahan preparadu		99.2	98.1	98.1	0.0%	-1.1%	0.63	0.63	0.00
<b>2</b>	<b>ALKOHOL HO TABAKU</b>		<b>94.8</b>	<b>107.4</b>	<b>107.4</b>	<b>0.0%</b>	<b>13.3%</b>	<b>4.76</b>	<b>4.76</b>	<b>0.00</b>
2.1	Alkohol		92.9	125.0	125.0	0.0%	34.6%	1.62	1.62	0.00
2.2	Tabaku		96.1	100.0	100.0	0.0%	4.1%	3.14	3.14	0.00
<b>3</b>	<b>HATAIS HO SAPATU</b>		<b>94.4</b>	<b>100.0</b>	<b>100.0</b>	<b>0.0%</b>	<b>5.9%</b>	<b>6.33</b>	<b>6.33</b>	<b>0.00</b>
3.1	Ropa ba mane		91.4	98.8	98.8	0.0%	8.1%	1.25	1.25	0.00
3.2	Ropa ba feto		92.8	99.6	99.6	0.0%	7.4%	0.93	0.93	0.00
3.3	Ropa ba labarik ho bebe		92.0	100.4	100.4	0.0%	9.1%	2.13	2.13	0.00
3.4	Sapatu ho rikusoin rasik		96.2	100.4	100.4	0.0%	4.4%	2.02	2.02	0.00
<b>4</b>	<b>UMA</b>		<b>94.2</b>	<b>103.2</b>	<b>102.8</b>	<b>-0.4%</b>	<b>9.2%</b>	<b>6.58</b>	<b>6.56</b>	<b>-0.02</b>
4.1	Aluga uma		100.0	100.0	100.0	0.0%	0.0%	0.84	0.84	0.00
4.2	Manutensaun no hadiak hela fatin		93.4	104.6	103.1	-1.4%	10.3%	1.63	1.61	-0.02
4.3	Be, eletrisidade, gas no sira seluk		93.7	103.3	103.3	0.0%	10.2%	4.12	4.12	0.00
<b>5</b>	<b>MANUTENSAUN RUTINA BA EQUIPAMENTU NO MOBILARIU UMA LARAN</b>		<b>95.0</b>	<b>100.3</b>	<b>100.2</b>	<b>-0.1%</b>	<b>5.5%</b>	<b>4.49</b>	<b>4.49</b>	<b>0.00</b>
5.1	Mobiliariu no tekstil uma laran		94.7	101.9	102.0	0.1%	7.8%	0.37	0.37	0.00
5.2	Manutensaun uma laran		n/a	99.8	98.9	-0.9%	n/a	0.40	0.40	0.00
5.3	Material no badaen hadia uma		n/a	100.2	100.2	0.0%	n/a	3.72	3.72	0.00
<b>6</b>	<b>SAUDE</b>		<b>91.3</b>	<b>100.0</b>	<b>100.0</b>	<b>0.0%</b>	<b>9.6%</b>	<b>0.84</b>	<b>0.84</b>	<b>0.00</b>
6.1	Produtu medicamentus no material equipamentus		n/a	100.0	100.0	0.0%	n/a	0.52	0.52	0.00
6.2	Doutor no atendimentu husi hospital		n/a	100.0	100.0	0.0%	n/a	0.32	0.32	0.00
<b>7</b>	<b>TRANSPORTASAUN</b>		<b>94.2</b>	<b>99.0</b>	<b>100.1</b>	<b>1.1%</b>	<b>6.2%</b>	<b>7.01</b>	<b>7.09</b>	<b>0.08</b>
7.1	Sosa kareta		n/a	101.8	101.8	0.0%	n/a	0.66	0.66	0.00
7.2	Utiliza equipamentu transportasaun pessoal		n/a	97.4	99.7	2.4%	n/a	3.35	3.43	0.08
7.3	Hadia transportasaun		n/a	100.0	100.0	0.0%	n/a	3.00	3.00	0.00
<b>8</b>	<b>KOMUNIKASAUN</b>		<b>100.0</b>	<b>87.5</b>	<b>87.5</b>	<b>0.0%</b>	<b>-12.5%</b>	<b>2.19</b>	<b>2.19</b>	<b>0.00</b>
8.1	Hadia equipamentu telekomunikasaun		100.0	87.5	87.5	0.0%	-12.5%	2.19	2.19	0.00
<b>9</b>	<b>REKREASAUN NO KULTURA</b>		<b>95.1</b>	<b>99.1</b>	<b>99.1</b>	<b>0.0%</b>	<b>4.2%</b>	<b>3.36</b>	<b>3.36</b>	<b>0.00</b>
9.1	Equipamentus audio visual, fotografia no produs informasaun		n/a	97.6	97.4	-0.2%	n/a	0.02	0.02	0.00
9.2	Sasan rekreasaun no kultura		n/a	98.6	98.6	0.0%	n/a	2.09	2.09	0.00
9.3	Jornal, livru no equipamentu hakerek		n/a	100.0	100.0	0.0%	n/a	1.25	1.25	0.00
<b>10</b>	<b>EDUKASAUN</b>		<b>97.3</b>	<b>100.0</b>	<b>100.0</b>	<b>0.0%</b>	<b>2.8%</b>	<b>2.65</b>	<b>2.65</b>	<b>0.00</b>
			97.3	100.0	100.0	0.0%	2.8%	2.65	2.65	0.00

Periode referencia husi Indise: Dezembru 2012 = 100.0

TABELA 3. Analytiku Indise EX-DILI		NUMERU INDISE			TROKA PERSENTAGEN		KONTRIBUISAUN PONTUS		TROKA PONTUS
		Jul 2012	Jun 2013	Jul 2013	Jun-13 to Jul-13	Jul-12 to Jul-13	Jun 2013	Jul 2013	Jun-13 to Jul-13
<b>Julho 2013</b>									
<b>Grupus no Klase Despesas/Gastus</b>									
	<b>GRUPU HOTU</b>	n/a	103.1	102.9	-0.2%	n/a	103.1	102.9	-0.2
	<b>GRUPU HOTU LA KONTA UMA</b>	n/a	103.2	103.0	-0.2%	n/a			
<b>1</b>	<b>HAHAN NO BEBIDAS</b>	n/a	102.9	102.4	-0.5%	n/a	77.50	77.12	-0.38
1.1	Pao ho hahan husi Fós	n/a	102.3	102.5	0.2%	n/a	5.35	5.36	0.01
1.2	Fós	n/a	101.9	100.1	-1.8%	n/a	27.30	26.82	-0.48
1.3	Naan	n/a	93.4	98.1	5.0%	n/a	5.92	6.22	0.30
1.4	Ikan ho hahan tasi	n/a	104.3	102.8	-1.4%	n/a	1.20	1.18	-0.02
1.5	Susu ben, keju ho manu tolung	n/a	100.0	100.3	0.3%	n/a	0.69	0.69	0.00
1.6	Bokur ho mina	n/a	101.1	101.0	-0.1%	n/a	4.30	4.30	0.00
1.7	Frutas	n/a	99.8	100.8	1.0%	n/a	1.61	1.63	0.02
1.8	Vejetais	n/a	104.7	103.0	-1.6%	n/a	19.58	19.25	-0.33
1.9	Masin midar, marmelada, bani ben, chocolate	n/a	109.7	111.1	1.3%	n/a	3.93	3.98	0.05
1.10	Produtu Aihan	n/a	103.9	106.1	2.1%	n/a	4.05	4.13	0.08
1.11	Café, xá, no kakau	n/a	112.4	112.4	0.0%	n/a	3.23	3.23	0.00
1.12	Be, Bebidas, jus ai fuan no modo tahan	n/a	106.8	103.6	-3.0%	n/a	0.25	0.24	-0.01
1.13	Hahan preparadu	n/a	96.0	96.0	0.0%	n/a	0.08	0.08	0.00
<b>2</b>	<b>ALKOHOL HO TABAKU</b>	n/a	110.3	112.0	1.5%	n/a	7.59	7.70	0.11
2.1	Alkohol	n/a	122.1	122.8	0.6%	n/a	1.96	1.97	0.01
2.2	Tabaku	n/a	106.8	108.8	1.9%	n/a	5.63	5.74	0.11
<b>3</b>	<b>HATAIS HO SAPATU</b>	n/a	103.6	103.2	-0.4%	n/a	3.80	3.79	-0.01
3.1	Ropa ba mane	n/a	104.7	104.7	0.0%	n/a	0.93	0.93	0.00
3.2	Ropa ba fetu	n/a	100.7	100.7	0.0%	n/a	0.63	0.63	0.00
3.3	Ropa ba labarik ho bebe	n/a	103.9	103.9	0.0%	n/a	1.25	1.25	0.00
3.4	Sapatu ho rikusoin rasik	n/a	104.4	102.9	-1.4%	n/a	1.00	0.99	-0.01
<b>4</b>	<b>UMA</b>	n/a	103.2	102.8	-0.4%	n/a	2.53	2.52	-0.01
4.1	Aluga uma	n/a	100.0	100.0	0.0%	n/a	0.00	0.00	0.00
4.2	Manutensaun no hadiak hela fatin	n/a	105.3	105.3	0.0%	n/a	0.73	0.73	0.00
4.3	Be, eletrisidade, gas no sira seluk	n/a	102.3	101.8	-0.5%	n/a	1.80	1.79	-0.01
<b>5</b>	<b>MANUTENSAUN RUTINA BA EQUIPAMENTU NO MOBILARIU UMA LARAN</b>	n/a	107.0	108.5	1.4%	n/a	2.83	2.87	0.04
5.1	Mobiliario no tekstil uma laran	n/a	103.4	104.0	0.6%	n/a	0.08	0.08	0.00
5.2	Manutensaun uma laran	n/a	106.8	106.8	0.0%	n/a	0.21	0.21	0.00
5.3	Material no badaen hadia uma	n/a	107.0	108.7	1.6%	n/a	2.54	2.58	0.04
<b>6</b>	<b>SAUDE</b>	n/a	98.3	98.3	0.0%	n/a	0.32	0.32	0.00
6.1	Produtu medicamentus no material equipamentus	n/a	98.0	98.0	0.0%	n/a	0.27	0.27	0.00
6.2	Doutor no atendimentu husi hospital	n/a	100.0	100.0	0.0%	n/a	0.06	0.06	0.00
<b>7</b>	<b>TRANSPORTASAUN</b>	n/a	101.8	101.8	0.0%	n/a	3.41	3.41	0.00
7.1	Sosa kareta	n/a	103.1	103.1	0.0%	n/a	0.31	0.31	0.00
7.2	Utiliza equipamentu transportasaun pessoal	n/a	103.6	103.6	0.0%	n/a	1.45	1.45	0.00
7.3	Hadia transportasaun	n/a	100.0	100.0	0.0%	n/a	1.65	1.65	0.00
<b>8</b>	<b>KOMUNIKASAUN</b>	n/a	90.7	90.7	0.0%	n/a	1.26	1.26	0.00
8.1	Hadia equipamento telekomunikasaun	n/a	90.7	90.7	0.0%	n/a	1.26	1.26	0.00
<b>9</b>	<b>REKREASAUN NO KULTURA</b>	n/a	102.4	102.4	0.0%	n/a	3.05	3.05	0.00
9.1	Equipamentus audio visual, fotografia no produs informasaun	n/a	107.7	107.7	0.0%	n/a	0.00	0.00	0.00
9.2	Sasan rekreasaun no kultura	n/a	100.0	100.0	0.0%	n/a	2.22	2.22	0.00
9.3	Jornal, livru no equipamentu hakerek	n/a	109.4	109.4	0.0%	n/a	0.83	0.83	0.00
<b>10</b>	<b>EDUKASAUN</b>	n/a	100.0	100.0	0.0%	n/a	0.87	0.87	0.00
10.1	Edukasaun	n/a	100.0	100.0	0.0%	n/a	0.87	0.87	0.00

Periode referencia husi Indise: Dezembru 2012 = 100.0



## **NOTAS BA USA NAIN SIRA**

Ida ne'e hanesan publikasaun dalahitu husi seri 2 IPK ba Timor-Leste. Seri 2 hamutuk ho resultadu husi revisaun bot ho nia todan (*weight*) husi IPK Timor-Leste. Weight foun baseia ba weight resultadu pesquisa konaba rendimentu no despesas/gastus umakain 2011. Iha papel informasaun rua konaba revisaun: *Primeiru* revisaun IPK Timor-Leste 2012. Isu ba konsiderasaun publika ona iha Novembru 2012 hodi buka visaun husi usanain konaba espasu ba isu konsiderasaun iha revisaun no exercisiu troka todan (*Weight*). *Segundu* Introdusaun konaba seri 2 IPK Timor-Leste nebe publika ona iha 17 de Maio 2013 hato'o ona resultadu ba usanain sira iha fase konsultasaun hodi foti desisaun final kona ba IPK foun, hamutuk ho informasaun iha troka weight tuir pola no klasifikasaun foun nebe introdus iha IPK seri 2. Papel informasaun rua ne'e bele hetan iha website DNE iha [www.dne.mof.gov.tl](http://www.dne.mof.gov.tl).

## **ESPLIKASAUN KONA BA IPK**

Indise Presu Konsumidor (IPK) sukat movimentu presu tuir tempu iha grupu sasan ho servisu tuir proporsional presu as husi despesas/gastus ba umakain privadu tuir sira nia hela fatin. Grupus ne'e akumulasaun sasan ho servisu, mak hanesan grupu sanulu iha kraik.

1. Hahan no laos bebidas alkohol; 2. Alkohol ho tabaku; 3. Hatais ho sapatu; 4. Uma; 5. Mobiliariu, Equipamentus uma kain no manutensaun rutina uma kain; 6. Saude; 7. Transportasaun; 8. Komunikaun; 9. Rekreasun no kultura; 10, Edukasaun.

Informasaun kompletu ba IPK Timor-Leste esplika iha liatudun IPK Timor-Leste no mos bele download husi DNE website iha [www.dne.mof.gov.tl](http://www.dne.mof.gov.tl)

## **INDISE PUBLIKASAUN**

Numerus IPK ne'e produs husi Direcção Geral de Estatística DGE publika kada fulan antes loron ikus ba fulan refere.

Primeiru Indise publika husi DGE maka IPK Timor - Leste. Data husi Indise Nasional ida ne'e hatudu iha numeru save no tabela 1 husi publikasun ida ne'e.

DGE mos publika Indise rua hanesan segundu Indise ba analitiku Indise – Ida representa movimentu presu iha Dili no ida seluk representa movimentu presu distritus iha Timor-Leste (Ex-Dili). Analitiku seri sira ne'e kompila husi subset husi grupu IPK no hatudu iha tabela 2 ho 3 iha publikasaun ida ne'e.

## **KOLEKTA PRESU BA IPK**

Atu kolekta presu hahu uluk husi treinamentu ba pesoal staf kolektor iha base nebe hala'o husi DGE iha Dili. Kolekta presus iha distritus halao husi staf DGE Agencia, maibe iha presu balu kolekta husi survey special.

## **MODELU TODAN (weighting)**

Iha Despesa/gastus 35 (hanesan kategoria, husi Item) iha IPK seri 2 no kada klase ba despesas/gastus iha ninia todan(weight), atu sukat ninia importancia relative. Iha kalkula Indise, troka presu ba variedade klase despesas/gastus iha kombinasun hodi usa todan (weight). IPK seri 2 modelu todan (weighting) hanesan mos iha DNE website [www.dne.mof.gov.tl](http://www.dne.mof.gov.tl).

## **ANALISA BA MOVIMENTU IPK**

Movimentu iha Indise husi periode Ida ba periode seluk bele expresa husi troka iha pontu Indise ka troka presentagen. Troka presentagen hanesan kalkulasun atu hatudu/ilustra diferencia rua husi movimentasaun iha numeru indise.

- Movimentasaun entre korespondenti fulan husi tinan tutuir malu (*consecutive*).
- Movimentasaun entre fulan tutuir malu (*consecutive*).

Exemplu tuir mai hatudu/ilustra metode atu kalkula troka iha pontu indise no percentagen troka entre periode Rua.

Grupú IPK hotu: Numeru Indise Dili	
Janeiru 2013	101.4
Antes Janeiru 2012	90.7
Troka iha Pontus Indise	10.7
Percentagen troka $10.7/90.7 \times 100 =$	11.8%

Tabela idak-idak iha publikasaun ida ne'e prepara analisa detailu husi movimentu iha IPK husi periode antes, inklui informasaun iha movimentu ba grupu ho klase despesas/gastus. Ida ne'e hatudu mos kontribuisaun ho idak-idak nian ba total IPK. Hanesan klase despesas/gastus fos 2013 Timor-Leste fo kontribuisaun 17.85 pontus indise ba total grupu hotu ho numeru 101.3 ba Janeiru 2013. Ba koluna final hatudu kontribuisaun atu troka iha grupu hotu Pontus Indise ba grupu idak-idak ho Klase despesas/gastus.

### **ROUNDING (PEMBULATAN)**

Publikasaun numeru indise ho decimal ida, (no troka percentagen mos ho decimal ida) ne'e kalkula husi pembulatan numeru indise. Iha kazu balu, ida ne'e bele resultadu iha troka percentagen ba level total grupu indise bele sai husi range troka percentagen ba level komponente indise.

### **KONABA REVISAUN**

IPK indise original hala'o deit revisaun bainhira iha exceptional circumstancia, konaba sala nebe signifikante. Hanesan iha kazu ho presu indise hotu-hotu, iha reference periode indise, (exemplu iha periode nebe indise iha set igual 100.0) sei troka iha periodikamente.

### **DADUS NIA FATIN**

Diak tebes, Estatística inklui iha Publikasaun ida ne'e, iha ne'e dadus detailu liu (iha formatu tuir tempu seri) husi indise idak-idak bele download husi website DNE.