

# EXTERNAL TRADE STATISTICS

## MONTHLY REPORTS MAY, 2017



DIRECÇÃO GERAL DE ESTATÍSTICA  
TIMOR-LESTE



Ministerio das Finanças



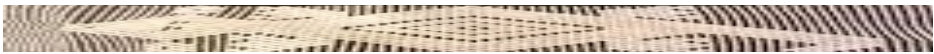
[www.statistics.gov.tl](http://www.statistics.gov.tl)

**Sr. Cristino Gusmão**  
**Director Nacional Economia Estatística e Social**  
**No. Telp: + 670 77230127**  
**Direcção Geral de Estatística**  
**Rua de Caicoli, Dili, PO Box 10**  
**Telefone: +670 3311348**  
**email: [dge@mof.gov.tl](mailto:dge@mof.gov.tl)**



## *Contents*

<b>Merchandise Trade Statistics</b> (summary of Key Data).....	Page 1
<b>Exports Tables</b> .....	Page 2-3
Table 1: Export of Coffee	
Table 2: Export by Country of Destination	
<b>Imports Tables</b> .....	Page 4-11
Table 3: Imports by Country of Origin	
Table 4: Imports by Chapter Heading (HS2)	



## ***Merchandise Trade Statistics Timor-Leste***

### ***Summary of Key Data***

***For the Period: May 01, 2017 to May 31, 2017***

<b>Merchandise Imports</b>	<b>\$35,741,719</b>
<b>Non Merchandise Imports</b>	<b>\$4,093,511</b>
<b>Total Imports</b>	<b>\$39,835,230</b>
<b>Exports</b>	<b>\$392,855</b>
<b>Re Exports</b>	<b>\$627,491</b>
<b>Total Exports</b>	<b>\$1,020,345</b>

### **NOTE:**

Merchandise Imports excludes values for goods imported for use by foreign Embassies And High Commissions, goods imported for the provision of foreign forces and goods Imported by UN Mission. Imports of goods by these organizations are deemed to be "Non Merchandise Imports".

Exports are goods comprising at least 50 percent Timor-Leste content by value.

Re-Exports are goods for export that were previously imported into Timor-Leste and comprise less than 50 percent Timor-Leste content by value. The external trade register cannot be compared directly with national accounts figures, because the aggregation and Classification, given its own purposes, they are not exactly the same.



## Exports of Coffee

For the Period: *May 01, 2017 to May 31, 2017*

Country of Destination	Quantity (Kg)	Value (\$US)
Portugal	115,200	207,360
Singapore	71,040	112,666
Australia	18,000	65,550
Korea Republic of	50	80
Total	204,290	385,656

**NOTE:** This report aggregates values for exports of coffee in various forms - green beans, roasted beans and ground coffee.



## Exports by Country of Destination

For the Period: *May 01, 2017 to May 31, 2017*

Country of Destination	Value (\$.000)
Portugal	207
Singapore	113
Australia	66
Malaysia	6
<b>Total</b>	<b>392</b>

**NOTE:** Due to the effects of rounding individual values may not add to totals.



# Imports by Country of Origin

For the Period: *May 01, 2017 to May 31, 2017*

Country of Origin	Value (\$US)
Indonesia	10,450
China, Peoples Republic of	5,455
Singapore	4,799
Hong Kong	3,716
Viet Nam	2,783
Brazil	1,249
Australia	867
Belgium	846
Malaysia	822
Japan	766
United States of America	510
Korea Republic of	498
Thailand	492
Portugal	490
Pakistan	206

*Continue...*



## Imports by Country of Origin

For the Period: *May 01, 2017 to May 31, 2017*

Country of Origin	Value (\$US)
Macau	201
Switzerland	159
Canada	154
New Zealand	128
Netherlands	121
Germany	121
Taiwan	64
India	61
United Arab Emirates	43
Fiji	36
Spain	36
Egypt	31
Chile	16
United Kingdom	15

*Continue...*





Country of Origin	Value (\$US)
Italy	11
Mexico	8
Brunei Darussalam	8
Bangladesh	6
South Africa	6
France	5
Philippines	4
Ukraine	2
Poland	1
<b>Merchandise Imports</b>	<b>35,742</b>
<b>Non Merchandise Imports</b>	<b>4,094</b>
<b>Total Imports</b>	<b>39,835</b>

**NOTE:** \* Excludes values for goods imported for use by foreign Embassies and High Commissions, goods imported for the provision of foreign forces and goods imported by UNMIT. Imports of goods by these organisations are deemed to be "Non Merchandise Imports". if one Products or Commodity come from different country origin and same Harmonised system Codes based on the ASYCUDA WORLD SYSTEM Called MANY.

Due to the effects of rounding individual values may not add to totals.



## Imports by Chapter Heading (HS2)

For the Period: *May 01, 2017 to May 31, 2017*

HS2 Code	HS Description	Total
02	Meat and edible meat offal	1,848
03	Fish and crustaceans, molluscs and other aquatic invertebrates	346
04	Dairy produce; birds' eggs; natural honey; edible products of animal origin, not elsewhere specified or included	601
07	Vegetables and certain roots and tubers; edible	355
08	Fruit and nuts, edible; peel of citrus fruit or melons	192
09	Coffee, tea, mate and spices	150
10	Cereals	2,036
11	Products of the milling industry; malt, starches, inulin, wheat gluten	575
12	Oil seeds and oleaginous fruits; miscellaneous grains, seeds and fruit, industrial or medicinal plants; straw etc.	50
13	Lac; gums, resins and other vegetable saps and extracts	10
14	Vegetable plaiting materials; vegetable products not elsewhere specified or included	2
15	Animal or vegetable fats and oils and their cleavage products; prepared animal fats; animal or vegetable waxes	593
16	Meat, fish or crustaceans, molluscs or other aquatic invertebrates; preparations thereof	360
17	Sugars and sugar confectionery	286
18	Cocoa and cocoa preparations	17
19	Preparations of cereals, flour, starch or milk; pastrycooks' products	1,034
20	Preparations of vegetables, fruit, nuts or other parts of plants	206

*Continue...*



HS2 Code	HS Description	Total
21	Miscellaneous edible preparations	319
22	Beverages, spirits and vinegar	1,947
23	Food industries, residues and wastes thereof; prepared animal fodder	83
24	Tobacco and manufactured tobacco substitutes	253
25	Salt; sulphur; earths, stone; plastering materials, lime and cement	1,004
26	Ores, slag and ash	11
27	Mineral fuels, mineral oils and products of their distillation; bituminous substances; mineral waxes	7,489
28	Inorganic chemicals; organic and inorganic compounds of precious metals; of rare earth metals	45
29	Organic chemicals	41
30	Pharmaceutical products	59
31	Fertilizers	10
32	Tanning or dyeing extracts; tannins and their derivatives; dyes, pigments and other colouring matter; paints etc.	158
33	Essential oils and resinoids; perfumery, cosmetic or toilet preparations	254
34	Soap, organic surface-active agents; washing, lubricating, polishing or scouring preparations	309
35	Albuminoidal substances; modified starches; glues; enzymes	19
37	Photographic or cinematographic goods	4
38	Chemical products n.e.s.	55

*Continue...*



HS2 Code	HS Description	Total
40	Rubber and articles thereof	436
42	Articles of leather; saddlery and harness; travel goods, handbags and similar containers; articles of animal gut	23
44	Wood and articles of wood; wood charcoal	210
45	Cork and articles of cork	5
47	Pulp of wood or other fibrous cellulosic material; recovered (waste and scrap) paper or paperboard	5
48	Paper and paperboard; articles of paper pulp, of paper or paperboard	289
49	Printed books, newspapers, pictures and other products of the printing industry; manuscripts etc.	145
51	Wool, fine or coarse animal hair; horsehair yarn and woven fabric	1
52	Cotton	1
54	Man-made filaments	1
55	Man-made staple fibres	1
56	Wadding, felt and nonwovens, special yarns; twine, cordage, ropes and cables and articles thereof	13
57	Carpets and other textile floor coverings	8
58	Fabrics; special woven fabrics, tufted textile fabrics, lace, tapestries, trimmings, embroidery	2
59	Textile fabrics; impregnated, coated, covered or laminated; textile articles of a kind suitable for industrial use	5
60	Fabrics; knitted or crocheted	1
61	Apparel and clothing accessories; knitted or crocheted	28
62	Apparel and clothing accessories; not knitted or crocheted	27
63	Textiles, made up articles; sets; worn clothing and worn textile articles; rags	773

*Continue...*



HS2 Code	HS Description	Total
64	Footwear; gaiters and the like; parts of such articles	173
65	Headgear and parts thereof	26
66	Umbrellas, sun umbrellas, walking-sticks, seat sticks, whips, riding crops; and parts thereof	4
67	Feathers and down, prepared; and articles made of feather or of down; artificial flowers; articles of human hair	6
68	Stone, plaster, cement, asbestos, mica or similar materials; articles thereof	34
69	Ceramic products	408
70	Glass and glassware	50
71	Natural, cultured pearls; precious, semi-precious stones; precious metals, metals clad with precious metal etc.	4
72	Iron and steel	537
73	Iron or steel articles	1,549
74	Copper and articles thereof	8
76	Aluminium and articles thereof	221
78	Lead and articles thereof	1
79	Zinc and articles thereof	91
80	Tin; articles thereof	1
82	Tools, implements, cutlery, spoons and forks, of base metal; parts thereof, of base metal	338
83	Metal; miscellaneous products of base metal	117
84	Nuclear reactors, boilers, machinery and mechanical appliances; parts thereof	1,626

*Continue...*



HS2 Code	HS Description	Total
84	Nuclear reactors, boilers, machinery and mechanical appliances; parts thereof	1,626
85	Electrical machinery and equipment and parts thereof; sound recorders and reproducers; television etc.	1,464
86	Railway, tramway locomotives, rolling-stock and parts thereof; railway or tramway track fixtures and fittings	25
87	Vehicles; other than railway or tramway rolling stock, and parts and accessories thereof	3,904
88	Aircraft, spacecraft and parts thereof	1
89	Ships, boats and floating structures	85
90	Optical, photographic, cinematographic, measuring, checking, medical or surgical instruments and apparatus	372
91	Clocks and watches and parts thereof	4
92	Musical instruments; parts and accessories of such articles	9
94	Furniture; bedding, mattresses, mattress supports, cushions and similar stuffed furnishings; lamps and lighting	586
95	Toys, games and sports requisites; parts and accessories thereof	309
96	Miscellaneous manufactured articles	56
<b>Merchandise Imports</b>		<b>35,742</b>
<b>Non Merchandise Imports</b>		<b>4,094</b>
<b>Total Imports</b>		<b>39,835</b>

**NOTE:** \* Excludes values for goods imported for use by foreign Embassies and High Commissions, goods imported for the provision of foreign forces and goods imported by UNMIT. Imports of goods by these organizations are deemed to be "Non Merchandise Imports".

Due to the effects of rounding individual values may not add to totals.



---

**Direcção Geral de Estatística**  
**Timor-Leste**

**Direcção Geral de Estatística**  
**Rua de Caicoli, Po Box 10**  
**Dili, Timor-Leste**  
**[www.statistics.gov.tl](http://www.statistics.gov.tl)**  
**[dge@mof.gov.tl](mailto:dge@mof.gov.tl)**

